



WICK FC

16/08/25 | 15:00





PROUD TO SUPPLY HOMES, FARMS, AND BUSINESSES IN CHELTENHAM

TALK TO US ABOUT:



Gas Oil +
Diesel



Home and Industrial
Heating Oils



Agricultural
Lubricants



Additives
and AdBlue

Contact your local team in today



0345 600 4040



certasenergy.co.uk



BISHOPS CLEEVE DEVELOPMENT

EVERYONE'S ENERGY KAYTE LANE STADIUM, KAYTE LANE, GL52 3PD
MEMBERS OF THE MARCLIFF GLOUCESTERSHIRE COUNTY LEAGUE

BISHOPS CLEEVE FOOTBALL CLUB IS A MEMBERS CLUB AND IS MANAGED BY AN ELECTED COMMITTEE FOR THE USE OF THE COMMUNITY WITHOUT PREJUDICE.

CHAIRMAN DAVE WALKER VICE CHAIRMAN CLIVE RAWLINGS SECRETARY NIGEL GREEN
GENERAL MANAGER DAN FORD DEVELOPMENT MANAGER ALEX CHEAL DEVELOPMENT
ASSISTANT MANAGER JOHN BANFIELD DEVELOPMENT COACH CURTIS OSINUGA
MEDIA BEN WARE

HELLO AND WELCOME BACK TO KAYTE LANE AS THE DEVELOPMENT SIDE MAKE THEIR HOME DEBUT IN THE MARCLIFF GLOUCESTERSHIRE COUNTY LEAGUE!

Pre-season started with two wins out of two as we hosted Cheltenham Civil Service Reserves for our opener on Saturday the 5th of July with a 5-1 scoreline going in our favour.

We followed this up with another win on Wednesday night as we travelled to/hosted Smiths Barometrics who, as you know, also play at Kayte Lane. Harry Davies, George Cuzner, Sam Coates, Solomon Osinugua, Sam Smith, and Toby Moss all found the net in an 8-2 win for the Devs.

Richard Joyce then brought his Hellenic Premier Division squad to Kayte Lane as we faced Thornbury Town, 68 were in attendance as we romped to a 3-0 home win courtesy of goals from Tommy Bond, George Ellerton and Archie Tucker. Our only defeat of pre-season followed as we fell to a 3-1 loss at Littleton, but bounced back with an emphatic 9-0 win over Fintan.

Preparations were rounded out with the visit of Cheltenham League Premier Division side FC Wickhamford to the Everyone's Energy Kayte Lane Stadium. George Cuzner struck either side of half time while Monty New and Toby Moss also got their names on the scoresheet in a 4-1 win.

We now find ourselves hosting our very first Marcliff Gloucestershire County League game in this current Development side era, having stepped onto a County League pitch for the first time last week at Totterdown United.

It was a baptism of fire of sorts, a tough pitch and rough opposition giving us a glimpse of how life in the Gloucestershire County League would look. We went behind early, Ollie Lovell picking up the ball 25 yards from goal and charging forward, beating two before picking out the bottom right corner after 13 minutes. We were then caught out by a short corner just four minutes later as Aaron Thorne flicked on a low driven shot to take it past Noah Sunter in the Cleeve goal.

Great work from Ben Hunt retained possession on the edge of the Totterdown box which allowed Finn Smith to send the ball goalwards where Dan Beasley brought it under control and prodded it home with 22 minutes on the clock. A dubious penalty then gave us the chance to draw level, Kian Gardiner stepping up and beating the keeper to make it 2-2 after 26 minutes.

If the rest of the match was anything like the start, then we were in for an incredible game! Unfortunately, the heat and conditions got to everyone and there was little of note for the rest of the 90 minutes. This was then followed by a 2-1 cup defeat at Tewkesbury Town.

FROM THE MANAGER



Good afternoon, and welcome to Kayte Lane. It's a new season and we are delighted to be visiting new places this year. The Hellenic League has been a huge help for our players to bed themselves into adult football. However, the hard graft for them starts now with the challenges this league gives.

At the time of writing this, we have played two matches and both have been very similar. Two physical, direct sides that found a way to get a result. While both games have led to us conceding soft goals, I have been pleased with the reaction of the group in those matches.

Pre season has been an indifferent time for us with results and the way the squad has formed. As a development side, you will naturally lose players, but its a credit to our environment that we have managed to only lose one player. There have been plenty of incomings however with the addition of Finn Smith (from Pershore), Sam Smith and many more. The blend of young players with the experience we have brought in will hopefully help us be at the right end of the table.

We look forward to bringing you a different level of football this season and I hope that we continue to bring new eyes to the football club as we start our journey in the Marcliff County League.

Enjoy the game.

CHEALY

WALK TO SUPPORT



WALK TO SUPPORT

BISHOPS CLEEVE FC TO SPORTING CLUB INKBERROW
23 MILES MONDAY 25 AUGUST



Dan Ford, Ben Ware, Johnny Davies and Tom Sarson will be undergoing a 23 mile trek from Kayte Lane to Sporting Club Inkberrow on August the 25th.

Money raised will be split between the club's Comets programme, pan-disability football sessions for disabled boys and girls aged between 5 and 11 held at the Everyone's Energy Kayte Lane Stadium on Mondays, and the Archie Matthews Trust, one of the club's charity partners.

The Archie Matthews Trust aim to promote strong mental health for young men across Gloucestershire and its surrounding areas. They strive to raise awareness of the

challenges that young men face, and reduce the stigma that still remains around young men's mental health.

Any money you can spare will would be greatly appreciated by all involved with funds going towards providing opportunities for disabled kids to play football as well as saving the lives of those that may be suffering or struggling and unable to seek help.

You can donate on GoFundMe [here](#) and keep up to date on the clubs social media accounts with live updates on Instagram.

Thank you and good luck to the walkers!

MARCLIFF

Bathroom Showroom & Plumbing Supplies

SPONSORS OF GLOUCESTERSHIRE COUNTY LEAGUE



1-3 The Badminton Centre
Station Road, Yate, South
Gloucestershire, BS37 5HT
01454 324994

www.marcliff.co.uk

Find us on Google for a 360°
virtual tour of our showroom



An independant company established in Yate – South Gloucestershire.
We pride ourselves on our knowledgeable and helpful staff together with large
availability of plumbing and heating materials including our recently
refurbished bathroom and shower showroom with over 20 displays.

Open Monday to Friday – 8:30am – 5pm
Saturday – 8:30 am – 12pm

THE FIRST TEAM

Bishops Cleeve dominated against Didcot Town, scoring seven goals en route to their victory at the Meadow stadium.

WORDS FROM BILLY TAYLOR

Cleeve broke the deadlock when a long ball landed perfectly to Jack Watts, and he was able to square it to an open Jay Malshanskyj, who put it away for the first of the game. The Mitres added their second moments later, with the two goal contributors of the first switching places as Malshanskyj laid the ball off to Watts, where he smashed it home in what felt like a groundhog day situation.

The third for The Mitres came from a Luke Payne cross which Ross Langworthy jumped in the air for, and it fell to the feet of Watts, who turned and put it away for his second of the match. Langworthy joined the goalscoring party when the forward chipped the ball impressively over the keeper for the fourth.

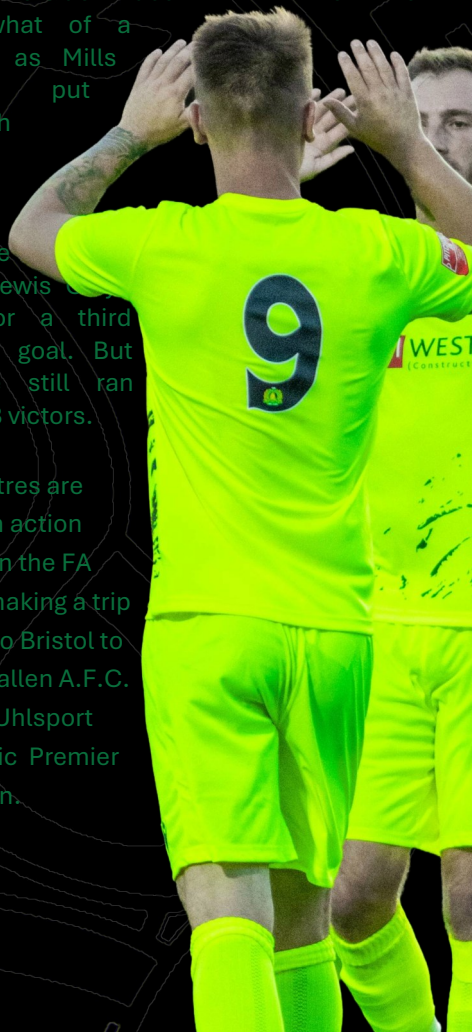
Moments later a free kick from the right-hand side saw Malshanskyj get himself his brace, as he beat Leigh Bedwell at the front post for Cleeve to go 5-0 up in the interval. The goals didn't stop coming; literally seconds into the second half, Langworthy blocked Bedwell's long ball to have an easy trail to the net for his second.

Lewis Spurrier added himself to the scoresheet with Cleeve's seventh, as Langworthy's run from the right was cut back to the midfielder,

and he slotted it home into the top corner. Didcot added a strike just after the hour mark when J-Hall's effort from the edge of the box curled into the top corner for a superb finish.

The Railwaymen went to go and add on another, as a counter attack in the final minutes saw Cameron Mills get another for the home side. Didcot went on somewhat of a streak as Mills was put through once again and put the past Lewis Cotton for a third Didcot goal. But Cleeve still ran out 7-3 victors.

The Mitres are back in action today in the FA Cup, making a trip down to Bristol to face Hallen A.F.C. of the UHlsport Hellenic Premier Division.



MISS MITRES

Bishops Cleeve Ladies won once again on the road in pre-season, this time with a hard-fought 2-1 victory over Hereford Pegasus.

WORDS FROM DAN BRIAN

Leonie Gough was at the double, converting a controversial penalty at the end of the first half and making it two courtesy of a fine effort with a quarter of an hour left to play.

After a quiet opening 10 minutes, it was Pegasus who had the first shot of the affair, firing just wide from a free-kick on the edge of the area.

It was a dominant first half from the hosts, who took of advantage of their majority share of possession when their striker took the ball on the turn with class and fired past Lexi Jones in net with apparent ease.

If anything, going behind seemed to inspire the Mitres, as they started showing more fight when a goal down than they had when level.

Only five minutes after the game's opener, Lottie Winter fired a ball low across the box, but the strike from Tamara Griffiths was met comfortably by the gloves of the goalkeeper. Signs of life were clearly there, however.

A water break midway through the first 45 meant that there was a hefty chunk of added time to be played at the end of it, and this only gave Cleeve more and more opportunities to attack.

Only two minutes after Gough's shot from outside the box was just about tipped over for a corner, the under pressure referee pointed to the spot for handball. Gough stepped up, converted, and that meant it would be all to play for after the break.

The first five minutes of the second half were hectic, with the hosts only just seeing a shot go wide of the post moments after Immy O'Brien fired over from a free-kick. In the 50th minute, the visitors had the ball in the net to round off a lovely bit of football, but the flag was up for offside.

The game then quieted down and reverted to feeling like a pre-season friendly for the next 15 minutes, until the Mitres had to scramble for their lives to survive a corner that must've seen them face at least four shots.

With the clock ticking down and the game going the way that it was, it was clear that scoring the next one and gaining the momentum would be huge. When Gough stepped up and made it 2-1 after an unstoppable run past the defence from Yas Francis, it was looking like it might be Bishops Cleeve's day after all.

They held on for the final quarter of an hour, and that win against tier-above Hereford Pegasus made it six out of seven for friendlies this pre-season.

Next up for them is Odd Down Development in Bath on Sunday.



**For all your match and
training needs.**

**Workwear, rugby kits and
other sports products are
available.**

0845 3880556

www.boca-soccer.co.uk



NOTES ON THE
OPPOSITION



**WICK FC
THE OWLS
1971**

As old photographs will show Wick had a village football team long before a group of young local lads formed Wick CA in 1971.

Unable to play at Oldbury Lane at that time, they played their first couple of seasons on a patch of land off Naishcombe Hill, as Oldbury Lane was home to Wick Athletic (whose history we can trace back to the 1930s), and Partridge & Love. The young Wick side quickly saw success, winning their Regional division without losing a game. A feat almost repeated the following season when they finished as runners up. Then came a switch to the Bristol & District league, where success continued taking the division 4 title in 1974, and winning the GFA Minor cup the season after. When Partridge & Love disbanded, it gave Wick CA the opportunity to relocate to Oldbury Lane, where they later amalgamated with Wick Athletic to form a single club in the mid 70s.

This sparked a lengthy period of progress for the club with the introduction of a Reserve side. The 1st team's triumph in the 1978 Junior Cup was followed by double celebrations in 1982 when both club sides were promoted - the 1st team winning the B&D Senior Div and the Reserves as runners up in B&D Div 4. Success continued and two seasons later Wick had another double celebration with the 1st team taking the Bristol Prem Combination div 1 title and the Reserves the B&D div 3 crown. The following years were a lean period for the club which included relegation. Then with a name change to RMC Wick (through its sponsorship from the local quarry) fortunes turned in 1998 with a second success in the GFA Junior Cup.

This was the catalyst to another successful

period at the club, and in the 1999/2000 season the First team returned to the Bristol Prem Comb after taking the B&D Senior Div title. Another promotion the following season saw the First team in the Premier Div of the Bristol Prem where they won the Bristol Prem Cup in both 2003 & 2005.

With an influx of new players, Wick were able to introduce a third side with this A team starting in B&D div 6. 2004 saw the First team finish fourth in the Bristol Prem, and promotion for both the Reserves and A teams, although the Reserves tasted relegation to B&D div 2 the following season. Wick's dreams of promotion to the County League were dashed in the 2004/5 season when a poor end to the season saw them lose their leading position at the half-way stage. In the 2007/8 season the reserves were promoted to the B&D Senior div, but there was little further success for the clubs three Saturday sides until the 2016/17 season, which saw the first team narrowly pipped for the Bristol Prem Comb title but gain promotion to the Marcliffe County League under the reins of Mike Strawford.

The 2017/18 season saw the A team fold through a lack of younger players, but the formation of a second veterans side playing on a Sunday, where both vet sides enjoyed league and Cup success. The 2019/20 season looked set to be a fantastic year for both the first team and reserves, but with league and Cup honours in sight, the season fell foul to the COVID-19 pandemic. On the upside the reserves were promoted to the Prem Comb Div 1. Progress on the field continued the following season with the first team taking the County League title after an epic battle with Shirehampton.



Unfortunately our planning application for step 6 development took too long to get and so Shirehampton was given the promotion slot. Failing to gain promotion resulted in an exodus of players and management all eager to play at step 6, which meant complete rebuild of the squad in the 2021/2022 season managed by Kev Pollard and Jamie Johnson assisted by Nathan Broe (Coach) and Tom Darby (goalkeeper coach).

Last season was a mixed bag for Wick FC, which saw it's reserve team and management leave part way through the season to join a local step 6 side, which caused Wick to pull the reserves from the

Prem Comb. The first team continued to rebuild, the A team won promotion, Vets won a league and cup double, while Wick Sunday enjoyed a successful season, winning the league cup. The new 2024/25 season will see a new young first team management team in place, with Callum Fudgell and Josh Brown bringing a fresh group of players to the club, to continue our ambition for step 6 football at Wick. After finishing a credible fourth, the same group will now aim for major honours this season. The club continues to grow with the formation of a new over 55 vets team, and a girls section led by Josh Pollard in the 2025/2026 season.

**FEATURED
PLAYER SPONSOR**



**Carpentry &
Construction**

**SPONSORS OF
WILL PUGH & SAM SIMTH**

THE COVER STORY

While our previous two seasons featured programmes covers donning movie poster and album cover inspired pieces, this season brings the introduction of art (because Admin ran out of ideas).

You may look at the front and think "that looks awful", but that's because it's art! Which often does look awful...but it's very much an 'each to their own' sort of thing where different people have different tastes, some more questionable than others.

This particular work of art is inspired by Andy Warhol of Men in Black 3 fame, a revolutionary artist who took the world by storm with pictures of soup in 1962. 32 pictures of soup to be exact. Warhol's background was in commercial illustration with his rise to fame coming from his depictions of normal, everyday objects but with a bold statement, elevating the mundane to fine art and blurring the lines between high and low culture. And much like the bread forgotten in the cupboard, art often does have a culture problem.

Alongside the likes of Roy Lichtenstein and Claes Oldenburg, Warhol helped to democratise art by making it more accessible to the normal people of the world. Adverts, comics, celebrities and everyday objects challenged the elitism of the art world and brought the culture of the public to the forefront.

It's defied by its bright and bold colours, playful imagery, and the normal stuff that it portrays. And now, it portrays Cleeve's badge as if it were Marilyn Monroe...or soup.



ADMIN'S COLUMN

You know what they say “the real treasure was the friends we made along the way”, unfortunately my friend in this case couldn’t tell his left and right and kept leading us into dead end and bollards. You have to wait until Winchester for the bollards!

“What are you on about?”

Good question, most the time I have no idea but this time we were galivanting about looking for a stolen golden cricket bat in Oxford. A totally normal way to spend a Tuesday evening if you ask me.

If you read the First Team programme here at Cleeve, you may know that ahead of our trip to Stratford Town in pre-season, we went on a treasure hunt around the town to find the Golden Quill! (It was at a pub). We followed this with a trip into Oxford, via Jeremy Clarkson’s pub ‘The Farmers Dog’, to attempt to find out who stole a bunch of posh blokes’ shiny cricket bat (in all fairness I was on the side of the guy that nicked it).

It took us all around the city where we took in the famous sites such as...an old building, another old building, an old building with some words on it, an old building with some pictures on it, and some other places, plus some pubs.

Using what we could see before our eyes, we were able to solve various clues and slowly tick off suspects, locations, runs, and pubs, however it was the fact we were doing it slowly which was the issue as we ended up running out of time and having

to head to the Loop Meadow Stadium for our game against Didcot Town. We won that game 7-3 which almost made up for it.

In the end, Johnny used the extra clues to figure out who it was, but I can’t remember what he said so I can’t actually give you any of the answers. That would be cheating anyway, go figure it out for yourself!

Unfortunately, I couldn’t convince the rest of the media team to go to Crocodiles of the World instead of Oxford, it was only a few minutes from Clarkson’s pub and would have had far more crocodiles and meercats than Oxford, which as far as I’m aware...didn’t have any. This comes not long after my request to visit a life size statue of the Gruffalo was also ignored :(.

Why does everyone hate fun except me?

Next on the list is Exeter where we will undoubtedly be looking for a golden something ahead of our game against Exmouth Town while I’ve also planned a bollard tour around Winchester and put forward the idea of visiting the UK’s only shoebill when we head down to Devon to face Bideford. In case you didn’t know, shoebills are the coolest bird in the world. Don’t take them to Crocodiles of the World though...(they eat crocodiles).



THE UNTOLD GAME

England are back to back European Champions. Not many teams can say that. The heroics of Hannah Hampton, Michelle Agyemang and of course Chloe Kelly - who just seems to thrive in those tense, crucial moments - were watched by a record audience, both in Switzerland and around the world.

It had drama and excitement, exactly what we watch football for, and England came home with a trophy, which is probably not what any of us watch football for! But it's no secret that the passion around the women's game has not always been allowed to blossom, stifled by restrictive regulations and rampant sexism. There was one moment, however, when it could have been different. In 1971, tired of the misogyny of the footballing world, the women struck out on their own, and held a World Cup in Mexico.

Following a popularity explosion during the First World War, women's football was banned in the UK, and throughout the middle of the twentieth century most of Europe followed suit. But it didn't stop women playing, and while they were prohibited from joining their national FAs, eventually organisations formed to shepherd the female game. By the 1960s, with the backing of a number of Italian women's clubs, it was time for international recognition, and so formed the FIEFF.

After two mildly successful tournaments on home soil, by 1971 the Italians were ready to take the show on the road. Mexico was

chosen, and accepted, hosting of the first ever women's World Cup. UEFA made its position clear immediately; the national FAs were to get their women in line, and presumably, back in the kitchen. FIFA didn't approve either, and the FA threatened those who wanted to participate. It limited the number of entrants, but not enough, and with sponsorship from Martini Rosso, five teams joined the hosts in Mexico for the competition.

In Britain, women's football was a tiny affair; amateur, largely unwatched, and derided. In Mexico it couldn't have been more different. Sponsorship allowed the players to focus on their playing, even if only for a couple of weeks. Goalposts were painted pink, and stadium staff wore pink, to encourage female fans. It was a blunt and probably misguided gesture, but it was enthusiastic. More important than either of those, though, were the fans. The first fixture of the tournament between Mexico and Argentina - in the Azteca Stadium in Mexico City - was played in front of 100,000 fans. The other group games at the stadium had high attendances too, including both of England's games. This wasn't just a sideshow for an interested few. It was football, for an impassioned fanbase, who didn't distinguish between the male and female game. In the other group, in Guadalajara, they played in front of sellout crowds of 25,000.

For England, the experience wasn't matched by the performance, as the side was put to the sword, conceding

eight goals and finishing bottom of their group, Mexico and Argentina progressing. But the feeling of playing in front of large, enthusiastic crowds was intoxicating, and more than made up for the poor showing. The crowds that followed the team around were so large, the players initially thought they must be sharing a flight with 'someone famous'.

Just over 350 miles to the north west, Denmark and Italy both beat France, before drawing with each other to secure qualification. England and France played each other to avoid the wooden spoon, which was given to England despite two goals by Jan Barton, mother of badminton star Gail Emms. But the main event was happening back at the Azteca. Denmark smashed Argentina 5-0 to advance to the final, while Mexico won the tighter of the two games against Italy, 2-1. The hosts in the final ensured the showpiece would be well attended, at least.

Just like the men's final the year before, 110,000 fans packed into the Azteca. There was no Pele to excite the crowds this time, but there was Susanne Augustesen, just fifteen years old and a prodigious talent. She would continue her career, in Italy, deep into the 1990s, but at this stage she was an unknown, even in the women's game. It didn't stop her giving Denmark the lead in the 26th minute, and then doubling that lead just after half time with a powerful left footed strike. Just after the hour, she put away her third. The first women's World Cup final, the first hat-trick hero. Not bad for an unaffiliated competition.

The England team returned home to headlines on their failure, but more

importantly, disownership from the WFA. Under pressure from the FA, and with their funding under threat, they didn't approve of the trip. Players received bans, and couldn't join new clubs unless they could prove they had only accidentally broken the WFA's rules by going. It wasn't exactly a heroine's welcome.

The backlash worked, and the women's game was driven, if not back underground, at least back under the radar. It would take another two decades before FIFA allowed the women an official World Cup, and slowly, the game has grown ever since. Just think where they'd be if they'd built on 1971 instead.

Enjoy the game.

Martyn Green, *The Untold Game*

Find more at TheUntoldGame.co.uk or on social media @TheUntoldGame



**YOUR
AD HERE**

**SPONSOR BISHOPS CLEEVE
DEVELOPMENT FOR EXPOSURE
ACROSS SOCIAL MEDIA AND
IN THE MATCHDAY PROGRAMME**

MEET THE TEAM



LEWIS CARTWRIGHT

-



BEN HUNT

-



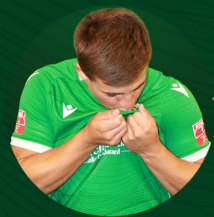
JOSH LONG

-



MIKE HODGINS

-



CALLUM DEBONIS

-



MATT MAGEE

-



MONTY NEW

-



GEORGE CUZNER

-



SJ OSINUGA

-



2025/26



UBAID SALEHBHAI

-

AVAILABLE



WILL PUGH

-

WP Carpentry & Construction



SAM SMITH

-

WP Carpentry & Construction



TOM DE QUINCY ADAMS

-

AVAILABLE



FINN SMITH

-

AVAILABLE



ALEX EBDON

-

AVAILABLE



ARCHIE TUCKER

-

AVAILABLE



HENRY DANTER-WELCH

-

AVAILABLE



NOAH SUNTER

-

AVAILABLE

THE STANDINGS

	P	W	D	L	GD	PTS
1 WICK	1	1	0	0	4	3
2 FRAMPTON UNITED	1	1	0	0	2	3
3 BROMLEY HEATH	1	1	0	0	1	3
4 QUEDGELEY W.	1	1	0	0	1	3
5 CLEEVE DEV	1	0	1	0	0	1
6 TOTTERDOWN UTD	1	0	1	0	0	1
7 FILTON ATHLETIC	1	0	1	0	0	1
8 HANHAM ATHLETIC	1	0	1	0	0	1
9 HENBURY & R.	1	0	1	0	0	1
10 TYTHERINGTON	1	0	1	0	0	1
11 CHALFORD	1	0	0	0	0	0
12 RUARDEAN HILL	1	0	0	0	0	0
13 SHARPNESS	1	0	0	0	0	0
14 BROADWELL AMTS.	1	0	0	1	-1	0
15 TEWKESBURY TOWN	1	0	0	1	-1	0
16 STOKE GIFFORD	1	0	0	1	-2	0
17 CRIBBS RES.	1	0	0	1	-4	0

NEXT HOME GAME

BROADWELL AMATEURS | 30/08/25 | 15:00

NEXT AWAY GAME

TYTHERINGTON ROCKS | 26/08/25 | 19:45

AUGUST

TOTTERDOWN UNITED | 09/08 | 15:00
TEWKESBURY TOWN | 12/08 | 18:30 | CUP
WICK | 16/08 | 15:00
TYTHERINGTON ROCKS | 26/08 | 19:45
BROADWELL AMATEURS | 30/08 | 15:00

SEPTEMBER

RUARDEAN HILL RANGERS | 13/09 | 15:00
QUEDGELEY WANDERERS | 27/09 | 15:00

OCTOBER

HANHAM ATHLETIC | 04/10 | 15:00
CRIBBS RESERVES | 11/10 | 15:00

NOVEMBER

FILTON ATHLETIC | 01/11 | 14:00
BROMLEY HEATH | 08/11 | 14:00
FRAMPTON UNITED | 22/11 | 14:00
SHARPNESS | 29/11 | 14:00

DECEMBER

STOKE GIFFORD SGS UTD | 13/12 | 14:00
TEWKESBURY TOWN | 20/12 | 14:00
HENBURY & ROCKLEAZE | 27/12 | 14:00



2025 26

JANUARY

CHALFORD | 03/01 | 14:00
WICK | 10/01 | 14:00
TYTHERINGTON ROCKS | 20/01 | 19:45
BROADWELL AMATEURS | 24/01 | 14:00
RUARDEAN HILL RANGERS | 31/01 | 14:00

FEBRUARY

QUEDGELEY | 03/02 | 19:45
HANHAM ATHLETIC | 14/02 | 14:00
CRIBBS RESERVES | 25/02 | 19:45
TOTTERDOWN UNITED | 28/02 | 14:00

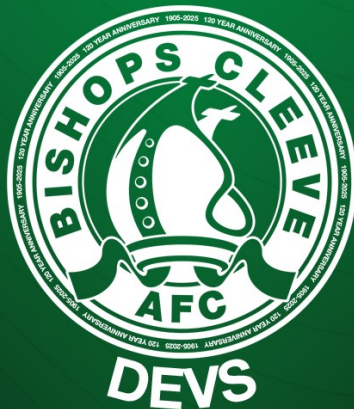
MARCH

FILTON ATHLETIC | 03/03 | 19:45
BROMLEY HEATH | 14/03 | 19:45
TEWKESBURY TOWN | 17/03 | 19:45
FRAMPTON UNITED | 21/03 | 15:00
SHARPNESS | 28/03 | 15:00

APRIL

STOKE GIFFORD SGS UNITED | 11/04 | 15:00
HENBURY & ROCKLEAZE | 25/04 | 15:00

DATES AND TIMES SUBJECT TO CHANGE



**YOUR
AD HERE**

**SPONSOR BISHOPS CLEEVE
DEVELOPMENT FOR EXPOSURE
ACROSS SOCIAL MEDIA AND
IN THE MATCHDAY PROGRAMME**



VICTOR BALITSKI
GEORGE CUZNER
CALLUM DEBONIS
KIRIL HALENIN
MATT MAGEE
WILLIAM PUGH
NOAH SUNTER
DANIEL BEASLEY
HENRY DANTER-WELCH
ALEX EBDON
MIKE HODGINS
MONTY NEW
UBAID SALEHBHAI
ARCHIE TUCKER
LEWIS CARTWRIGHT
HARRY DAVIS
GEORGE ELLERTON
BEN HUNT
FRANKIE O'LEARY
FIN SMITH
JAY WELLS
MARCUS CORNWALL
TOM DE QUINCEY ADAMS
KIAN GARDINER
JOSH LONG
SOLOMON OSINUGA
SAM SMITH



KAI WILSON
TYRONE FUDGELL
CORY LANGDON
BAYLEY RUDGE
JAYE RUDGE
KYLE RUSSELL
HARRY MADGE
LIAM ROBSON
KAI SHELLARD
FREDDIE MOGG
FRED TAYLOR-FOX
TOMMY LACEY
CHARLIE O'NEILL
JOSH BROWN
GEORGE LLOYD
CALLUM FUDGELL
MIKE HARDIMAN
DEKE LANGDON
LOUIS SHORT
STAFF
CALLUM FUDGELL
JOSH BROWN
BEN MACKENZIE
MATT DAVIS
JOHN GAYLARD
GARY REILLY