

GALA WILTON FC



v Patchway Town FC

Saturday 10 December 2022

2022-2023 SEASON

Gloucestershire County League



ACCREDITED
PART OF ENGLAND FOOTBALL



Sponsors of Gloucestershire County Football League

An independent company established in 1976 based in Yate - South Gloucestershire

We pride ourselves on our knowledgeable and helpful staff
together with large availability of plumbing & heating materials
including our recently refurbished bathroom & shower showroom with over 20 displays



Opening times
Monday to Friday - 8.30am-5pm
Saturday - 8.30am-12.30pm

Call 01454 324994
Visit www.marcliff.co.uk
Find us on Google for a 360°
virtual tour of our showroom

You can find us at
1-3 The Badminton Centre
Station Road - Yate



Gala Wilton was formed in 1952 when a group of friends from the Wilton Road area of Gloucester City created a side known as 'Wilton Rover'. Initially they played their football in the North Gloucestershire League gaining limited success winning the FJ Pope Cup in 1956/57 and Division 1 in 1959/60. In 1970 the club moved to their present home at The Gala Club and then, in 1971 at the third time of asking, they were elected to the Gloucestershire Northern Senior League.

They made an immediate impact in the League, winning Division 2 and beating local rivals Longlevens Star to the title. The following season they finished a creditable 5th in Division 1 and made an application to the County League. Initially they failed to gain membership losing out by one vote to Division 1 Champions Bishops Cleeve. However, it was consequently discovered that the Cheltenham side had misled the County League with regards to the distance from their changing rooms to the pitch and, on a second vote, Wilton Rovers gained membership. Although voted into the County League, the club still retained its membership of the GNSL courtesy of their reserves and, in 1978/79, they won Division 2 by a point from Walls United.

During their 12 seasons in the County League they achieved their best position of 3rd in 1980/81 behind Almondsbury Greenway & Shortwood United, but in 1984/85 they finished 18th and were relegated back to the GNSL. The following season they made an immediate return to the County League having achieved runners-up position to ICI Fibres in Division 1 of Gloucestershire Northern Senior League.

That same season they also won the

Diamond Jubilee Cup, a League Cup played for every four years at the time.

Having gained a return to the County League they remained in the League for just three seasons before they were relegated again. In 1989/90 they finished runners-up to St. Marks CA and, in the same season, they again won the Diamond Jubilee Cup but had changed the club name to Gale Wilton. After this second successive Diamond Jubilee victory, the club went on a downward spiral and, for one season, only fielded a single side.

The club reached a new low when they were relegated to the second Division of the North Gloucestershire League. The club met with limited success back in the North Gloucester League with the Reserve team winning Divisions 2 & 3 while the 1st XI reached the JO Roberts final only to lose to Westbury United. In 2002 the club transferred allegiances to the Cheltenham League and its fortunes started to change for the better. Several GFA cups and promotions later, the club regained promotion to the GNSL and in 2007-8 they won Division 2 by a clear 10 points from Dursley Town to enable them to return to Division 1 of Gloucestershire Northern Senior League.

Since that time the club has had tremendous success within its youth set up, with the Under 18s doing the League and Cup double in two consecutive seasons.

2017/18 season was another challenging season, although a definite improvement on recent seasons. Finishing in 13th place, there was a definite feeling of turning a corner and getting stronger from here on.

Recruitment within the Club, from our successful U16s squad, should be a real boost this season.

We are looking forward to further improvement and are very excited to develop our youth players.

The 2021/22 season has seen the introduction of a 4th Team made up of long serving players and players from last season's Under 16s.



Harry O'Connor (24) - CB

Harry has joined Gala for the start of the 2022/3 season having taken some time out of football. Before that 'H' flirted with Tuffley Rovers and Newent Town. Harry enjoys his Saturday 'cheat day' but normal duties are strict - 'Fish and a ricecake'.. It's a shame we haven't seen the body benefits yet :-)



Connor Harmer (28) 'Tin-man' - CDM

Connor has re-joined this season from local Cheltenham side Lakeside. He brings calmness & composure to the midfield to add another dynamic. 'Tin-man' is a reserved, chilled character who is booking to cement a place in the squad.



Callum Thomas (27) 'Lefty' - LB / LW

Callum broke into the first team last season after impressing for the reserves. Callum has a sweet left foot and an excellent set piece delivery. Definitely not one to stand next too in the shower.



Jordan Molyneux (24) - CM

Jordan is tipped to chip in with some goals this season! He had an impressive season last year, picking up the Player's Player award. Jordan is an engine in the midfield who covers every blade of grass on a matchday. Rumoured to be on Love Island next season too. 'What a man'.



Kieron Mace (29) - CB / LB

Kieron is a tough tackling, no nonsense defender with an abundance of footballing technique. 'Macer' usually pitches in with a worldie goal from time to time. One of the most senior players within the team. A true gent to have around the dressing room.





Alex Gayner (28) 'Maggie' - LWF / CAM

Magnet can usually be found after games trawling the Glos Vegas nightlife, shirt off, bits out, impressing the ladies. Alex is a class act on his day! A great dribbler of the ball who is arguably quicker with the ball than without. Alex is an animal lover, paying special attention to Sharks. 'Maggie' is set to be a threat this season... lock up your daughters!



Jon Antonio (22) - CB / CDM

Jon is a man mountain at the back offering great composure and distribution in passing range. He often enjoys a run out of defence and has an eye for goal from set piece situations. Jon is hoping to build on his 2nd season since re-joining Gala as a 17 year old.



Brad Loveridge (22) 'National league' - RB

Brad is Mr consistent! Cool & calm on the ball who loves a trick or three. The opposition should be weary as a nutmeg is Brad's speciality, 'National leagues' skills are a joke! Brad has been with the club a few seasons now and is looking to build on assists and goals this coming season.



Craig Howell (29) - CM (Vice Captain)

Mr Gala Wilton himself. Craig is the longest serving 1st team player. Craig wears his heart on his sleeve! Bags of energy, amongst other things! The schemer of the team. Craig loves a feisty game and is known by most ref's on a first name basis. A true 'Midder'.



Mike Baron (20) - CF

Probably the nicest man in football. He definitely has a Duracell battery as Mikey B does not stop running! Mike has an eye for goal. His workrate & tenacity are a defenders nightmare. Just a shame he is at uni some weeks and got rid of his mullet.



Martin Smith (28) 'Smithy' - CM

Smithy has had a great pre-season getting double figures. His third man running and timing is exceptional and he rarely misses a header - in attack or defence. Smithy was hindered by injury and holiday / stag do addictions. Gala are expecting a big season ahead for this young man.



Connor Walters (18) - RW / CM

Connor has raw pace! He is direct and doesn't mind putting his body on the line. Connor's twinkle toes are mainly down to his choice of boots / flippers. Connor is hoping to stamp down (excuse the pun) a place in the side now his school dance competitions have finished.



Dan McNally (33) 'Dmac' - CB & Club Captain

Dmac is a perfect role model to young players and embraces taking most 'under his wing'. His leadership skills are 2nd to none & Dmac loves to buy the sweets for the game and a round after. Solid organisational skills, great in the air, a proper centre half who would take a black eye for the team.... literally!



Ben Sluman (21) 'Sluey' - RW

Sluman is looking to build on last season's successes.. Well until his love life ended the footballing campaign. Sluey is quick & dynamic, he enjoys dribbling at the opposition and delivery is usually on point. Big season ahead for the new look Sluman (can of monster, bottle of fake tan and fresh trim at the ready).



Dan Gayner (28) - CF

Dan was voted Managers player of the year last season bagging 19 goals in the league. His 'Clinical' finishing was top notch, inspired by HT team talks. Like a camel, Dan works tirelessly for the team and often needs refreshments to get him through. 20 goals plus this season is the target for the better looking 'Gayner brother'.





Sam Webb (26) 'Webby' - CDM / Full back

Webby is a long serving player of Gala, the utility man who can rat out a performance wherever he plays on the pitch. Technically gifted... at football! Sam is a great lad to have around the dressing room. Webby will give his all for the club.. as long as his Mrs lets him!



Jay Dare (20) - RW

Jay is an incredibly talented football player, when he wants to be. Unfortunately Jay will probably be late to his own funeral.. For real! Quick, strong & skilful Jay offers ability all over the pitch. Got booked pre-season for wearing a Johnny dang necklace.



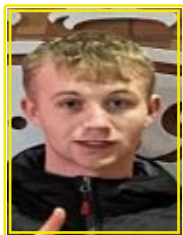
Brad Newman (22) - GK

Brad joined Gala this season having previously played at Tuffley Rovers & Gloucester Athletic. Brad's distribution is a joy to watch and matched by great shot stopping ability. We hope Brad settles in well and has a few clean sheets on his journey with Gala.



Lewis Skyers (38) - GK

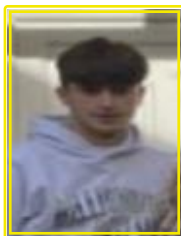
Lewis is the oldest player within the squad and well respected by all his teammates! Lew has previously played at a higher standard & even represented Great Britain in goal.. Arguably the best penalty saver in Gloucestershire. You will usually hear Lewis organising the team from the back in a relaxed and pragmatic style....not! Lewis has threatened to hang up the gloves...we have refused his request.



Kyle Gibbs (20) - CAM

Kyle has joined the club for the 20022/3 season after previously playing for Shortwood & Stonehouse Town. Massive Liverpool fan. Kyle is a true menace, his energy and passion is a real threat along with his technical ability. At 20 years old this lad has a big season ahead of him. Gala are excited to see this lad blossom!





Jacob Eakers (17) - LWB / RWB

Jacob is the youngest member of the squad but you couldn't tell with his workrate & tempo. Eakers is a naturally gifted footballer who will go a long way! He is currently playing u18's football for Gloucester City, so the progression into mens football is only going to make Jacob stronger and better. One to watch out for in the future. Learned everything he knows from his Dad.



Stu Griffith (35) 'Griffo' - 1st team Manager

Stu joined Gala for the 2021/22 season and guided them to a 5th place finish. 'Gaffer Griffo' spent his playing days mostly at Tuffley Rovers, reminding most about his goals in the FA Cup. His claim to fame was scoring against Joe Hart at the age of 11 for Glos primary schools. Stu is hoping to build on the foundations of last season and push this great bunch of lads to a successful season.



Jon Clay (35) 'Coch Clay' - 1st team coach

Jon is a long serving Gala player (CB) who joined the management team last season as 1st team coach. Jon has a steady head and a wagging finger (usually on nights out) Jon still thinks he has got it so we may see him lace those boots for a cameo appearance at some point this season. Coach Clay enjoys being social and gives the young lads a run for their money!



Andrew Moody (35) - Goalkeeping coach

Andrew 'Moodz' has a wealth of experience having played academy football at Aston Villa unfortunately retiring due to chronic knee injuries. Rumours speculate however it was because of the weight of his third leg. Moody supports man united (poor kid) and enjoys the odd guinness. 'Medic Moodz' has joined Stu & Jon on the management team this season.

UP THE GALA



History of Patchway Town



The Club was formed in 1958 mainly by ex pupils of the local high school and some local people from the Parish and started life as Old Patchwegians.

The Club made rapid progress over the seasons and by the end of the 1967-68 season headed the Bristol & District League.

In 1968 the Gloucestershire County Football League was formed and the Club were elected as one of the founder members.

The Club found it difficult in the early years with Clubs like Forest Green Rovers—Bristol St George and Mangotsfield as opposition.

In the mid seventies the Club moved ground to Scott Park this was due to the demise of Patchway United. The Club then changed its name to Patchway Town

In 1982 the Club had its poorest season and were relegated.

During this period a new Clubhouse was under construction and volunteers from both the Football Club and the Cricket Club were instrumental in its opening. At the same time Mr Bill Bonds was engaged as manager and set about reviving the Clubs fortunes. The Club quickly returned to the Gloucestershire County Football League and won the Championship in 1986-87 and again in 1991-92 but shortly afterwards manager Billy Bonds lost his fight against a serious illness.

In the mid nineties Kevin Horseman took charge and introduced his own brand of skill and professionalism and the Club has not looked back since. Kevin was a skilful and powerful forward and successfully transferred this to his players and his and the Club record is there for all to see. 1 Championship title and 1 Runners-up - 3 League Cup wins and 2 GFA Cup Runners-up.

Kevin Horseman retired at the end of 2012-13 season and this opened the door for Dean Horseman to take on the first team management roll. Dean picked up a lot of experience having worked as assistant manager to the first team for a number of seasons. He brought his own ideas to the team and was as passionate about the Club as anyone. Dean brought with him ex-player Craig Moore as his assistant. Craig was an excellent player and is well respected member at the Football Club .

Dean left the club at the start of the 2016-17 Season. After a brief stint by Karl Trotter, Club stalwart Phil Vice took over as player manager for the remainder of the season and oversaw the survival of our County League status on the final day of the season. With the support of Thomas Vaughan, Phil revived Patchway's fortunes and delivered a stable mid-table finish in the 2017-18 season.

The 2018-19 Season saw the departure of Tom and the appointment of Tim Minihane, with Phil primarily returning to a playing capacity.

Tim's reign was heavily impacted by the coronavirus pandemic and saw 2 seasons of null and void, including the 19-20 season where Patchway made an unbeaten start to the season before a further national lockdown.

Under the leadership of Tim and Reserve Team Manager, Damien Keary, the club grew and re-introduced a 3rd team to the club, now regularly train at the newly built 3G Facility at Scott Park (named after the late, great club legend, Jason Franklin) and massively improved ties and relationships with the local community.

Tim sadly stood down earlier this season and Phil has come back to the helm along with Damien from the reserves and Rich Hall helping out. The Reserves last season 2021/22 made it all the way to the final of the GFA junior cup south and with an amazing performance and last minute goal saw them lift the trophy 2-1.

Patchway Town Player Profiles - 2022/23

Tim Minihane - Manager - former old school no nonsense centre half joined Patchway Town from Tytherington rocks in 2019 before having to help weather the club through a pandemic and committing to seeing the growth of the club continue during his time as manager this will be Tim's 3rd season at the club.

Ash Wells - Assistant - First full season involved with the management but the homegrown lad grew up in and around the club, his playing time as a footballer has seen him at many clubs but Ash returns but to cross the bridge from playing to the coaching.

Sam Burgess - Goalkeeper - an absolute livewire in the gloves, pinnacle of our squad defines the words number 1.

Ollie Bacon - Defender - More of an all-round utility defender in his recent seasons but solid full back and plenty of encouragement from him, natural leader.

Dave Pritchard - Defender - Patchway Town's very own "Mr Motivator" on and off the field he's constantly keeping fit, another solid leader at the club the spine of the defence.

Paul Noyes - Defender - Calm and collected centre half that's no nonsense when fit will play a huge part in our success and raises the morale confidence and standards of the squad around him dramatically.

Barry Phillips - Defender - A rarely seen left footed centre half and with that a no-nonsense attitude, plays with passion seeping from the veins.

Callum Bagley - Defender - The wanderer returns after a spell away from the club over the last few years Callum's back at the Patch where he belongs strengthening the back line being able to play in any shape or style we ask Callum's experience at the back is vital to us being able to push on this season.

Callum Bell - Defender - An inspiration to young lads in the adult game Callum's first full season in men's football last season saw him improve and develop into a very talented defender at the club.

Ryan Rogers - Midfielder - A new signing last season and what a signing he was, settled straight into the middle and has been solid platform to build around.

Jurgen Pali - Midfielder – Simple, basic, solid, strong the list of terms to describe Jurgens game is endless and the way he goes about his game is with great attitude and commitment.

Sam Finn - Midfielder- “The engine room” this man will go and go and go, Sam is back with us after a period away travelling and is keen to drive the middle through this season.

Joesph Dalby - Midfielder - After under taking more senior roles within the club during last season running the return of the 3rd team at Patchway Joes commitments this season she’s him return to the middle of midfield where so often he covers every blade of grass during his 90 minutes.

Ben Dowdell - Midfielder – Didn’t gain the nickname “Nani” from nowhere, sharp, witty, skillful are just a few of Bens talent descriptions and we welcome Ben to the club for his debut season.

Phil Vice - Midfielder - Former gaffer and the “the general” on the pitch runs the middle of the park covers every blade of grass via foot and loves to voice an opinion or 2 worst nightmare and a pain to play against great talent and has been part of the club through the dark days but remained keen to see the club back on top.

Joe Weare - Attacker - Joe signs for Patchway after spells at Rockleaze and Stoke Rangers, Joes eye for goal strength, pace and aerial ability causes ructions for centre halves let’s hope he can stay fit during this campaign.

Matty Davies - Attacker - He certainly is the definition of senior these days but Matts work rate commitment and effort sees still right up there with the fittest lads in the club, Matt is a defensive nightmare and will score with whatever it takes has natural eye for goal.

Jean-Claude Berlouis - Attacker - Patchway Town welcome to the club Jean Claude, JC’s settling in back home very nicely it seems and this pacey winger is a great addition to the club, welcome on board JC.

Jamie Moore - Attacker - Born and bred in Patchway, Jamie has decided after stints at other clubs that his hometown is where he belongs, this experienced winger is a pleasure to have within the club.





GALA FC 2022/23 SPONSORS

M D E ELECTRICAL LIMITED



07776227785

MDE Electrical Limited was formed in 2017 by Marc Edwards. After 15 years working for local companies he took the plunge and went solo starting up his own company.

MDE Electrical Limited are NICEIC Approved and cover all aspects of electrical work from small house extensions to extensive hotels.

Marc is a Gala Legend and is still an active player, having given many years' service to the First Team and now providing his experience to the Seconds. Gala Wilton FC are very thankful for his support.



Happy
to Support
Gala Wilton FC



Longford Plastering
For all your plastering requirements



Happy
to Support
Gala Wilton FC

Tel: 01452 526750 • Mob: 07774 421856

MONSTER MIX

READY MIXED CONCRETE AND SCREED

☎ 01452 290390

www.monstermixconcrete.co.uk

Boca Teamwear



**For all of your match and
training needs**

**Workwear, rugby kits and other
sports products are available**

0845 3880556

www.boca-soccer.co.uk

Sponsors of the Les James League Cup Competition

& the Respect Program

Cellar Supplies

THE PUBLICAN'S CHOICE

Drinks supplier to the licensed trade

Proud to support

Gala Wilton F.C

01242 677118

www.cellarsupplies.co.uk



Follow us

[@cellarsupplies](https://twitter.com/cellarsupplies)

in2print

make an impression



Get onsite

With fresh, innovative design and print solutions, our team will deliver that all important result.

- 1 to 5 colour litho printing
- Creative design & artwork
- Full project management
- Specialised finishing
- FSC Certified

t: 01242 295555

e: info@in2print.com

w: www.in2print.com

Phoenix House, Elmstone Business Park, Stoke Road,
Elmstone Hardwicke, Cheltenham, Glos GL51-9SY



TODAY'S TEAM



GALA WILTON

PATCHWAY TOWN

REFEREE: NEIL HOLMES

Brad Newman	1	Tim Minihane
Brad Loveridge	2	Ash Wells
Kieron Mace	3	Sam Burgess
Dan McNally ©	4	Ollie Bacon
John Antonio	5	Dave Pritchard
Jordan Molyneux	6	Paul Noyes
Ben Sluman	7	Barry Phillips
Craig Howell	8	Callum Bagley
Dan Gayner	9	Callum Bell
Martin Smith	10	Ryan Rogers
Alex Gayner	11	Jurgen Pali
Kyle Gibbs	12	Sam Finn
Connor Walters	14	Joesph Dalby
Marcus Foxwell	15	Ben Dowdell
Harry O'Connor	16	Phil Vice
Connor Harmer	17	Joe Weare
Jay Dare	18	Matty Davies
Mike Baron	19	Jean-Claude Berlouis
Jacob Eakers	20	Jamie Moore
Sam Webb	21	
Callum Thomas	22	

SATURDAY 10 DECEMBER 2022

2PM KICK OFF